



The 9<sup>th</sup> ABF is held at South Coast National Scenic Area on Nov. 16-20, 2018 where we may see tens of thousands of migratory birds during winter. It is a great place for waterbirds, Black-faced spoonbill, Black-winged Stilt and most wonderful pied Avocet.

ABF



中文官網



English site



f 雲嘉南'好好玩!!!  
FUN in SW Coast



Published by  
Tourism Bureau Southwest Coast National Scenic Area  
Edited by Ecotourism Taiwan  
Photos by Liang-li Liu

廣告

IT'S TIME  
BIRDING IN  
TAIWAN!



Taiwan  
Tourism Bureau

雲嘉南 濱海國家風景區  
Southwest Coast  
National Scenic Area



# WHY? IT'S TIME BIRDING IN TAIWAN.

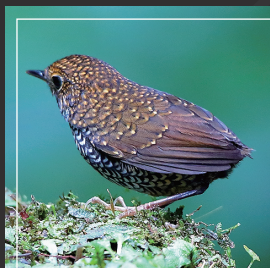


Top 10 reasons...

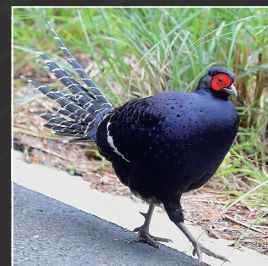
- ✓ High biodiversity - over 80 endemic and endemic subspecies. 630+ species in a compact area making it the top place for an introduction to Asian birding.
- ✓ On the East Asian - Australasian flyway.
- ✓ A diversity of butterflies, dragonflies, mammals, alpine to tropical flora...and all in a compact area.
- ✓ Great habitats - extensive well-protected mountain forest and wetlands.
- ✓ Year-round birding, on good trails or roadside. Most birds show well and easily photographed.
- ✓ stunning mountain landscapes ;
- ✓ People - friendly, conservation-minded, and interested in nature. A twitching scene. The friendliest Chinese-culture on Earth;
- ✓ Safe - low crime, no\* leeches, malaria, dengue or rabies. Clean, good hygiene and health-care.
- ✓ Excellent food.
- ✓ A lot can be done in a short tour of 5-10 days - no strict need usually for 2 weeks.



## BIRDING DESTINATIONS IN TAIWAN



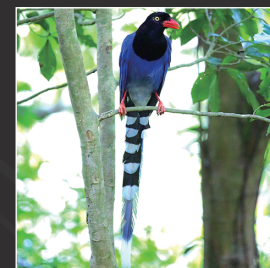
Taiwan Cupwing  
*Pnoepyga formosana*



Mikado Pheasant  
*Syrmaticus mikado*



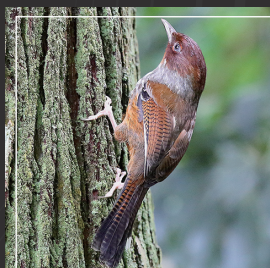
Taiwan Barbet  
*Psilopogon nuchalis*



Taiwan Blue-Magpie  
*Urocissa caerulea*



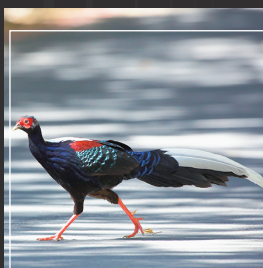
White-whiskered Laughingthrush  
*Trochalopteron morrisonianum*



Taiwan Barwing  
*Actinodura morrisoniana*



Steere's Liocichla  
*Liocichla steerii*



Swinhoe's Pheasant  
*Lophura swinhoii*



Taiwan Scimitar-Babbler  
*Pomatorhinus musicus*



Taiwan Hwamei  
*Garrulax taewanus*

**Sun-Link-Sea**  
Forest and Nature Resort

**Aowanda**  
Forest Recreation Area

**Huben** Village

**Alishan**  
National Forest Recreation Area

**Aogu**  
Wetland

**Budai**  
Salt Pan Wetland

**Qigu**  
wetland

**Kenting**  
National Park

Taichung

Nantou

Hualien

Yunlin

Chiayi

Tainan

Kaohsiung

Pingtung

**Yushan**  
National Park

**Taroko**  
National Park

**Wulai**

**Taipei**  
Botanical Garden

Taipei